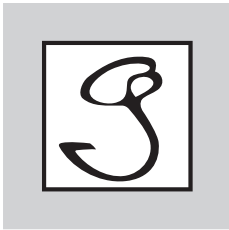


Be Ahead

OPENING UP
A NEW ART WORLD

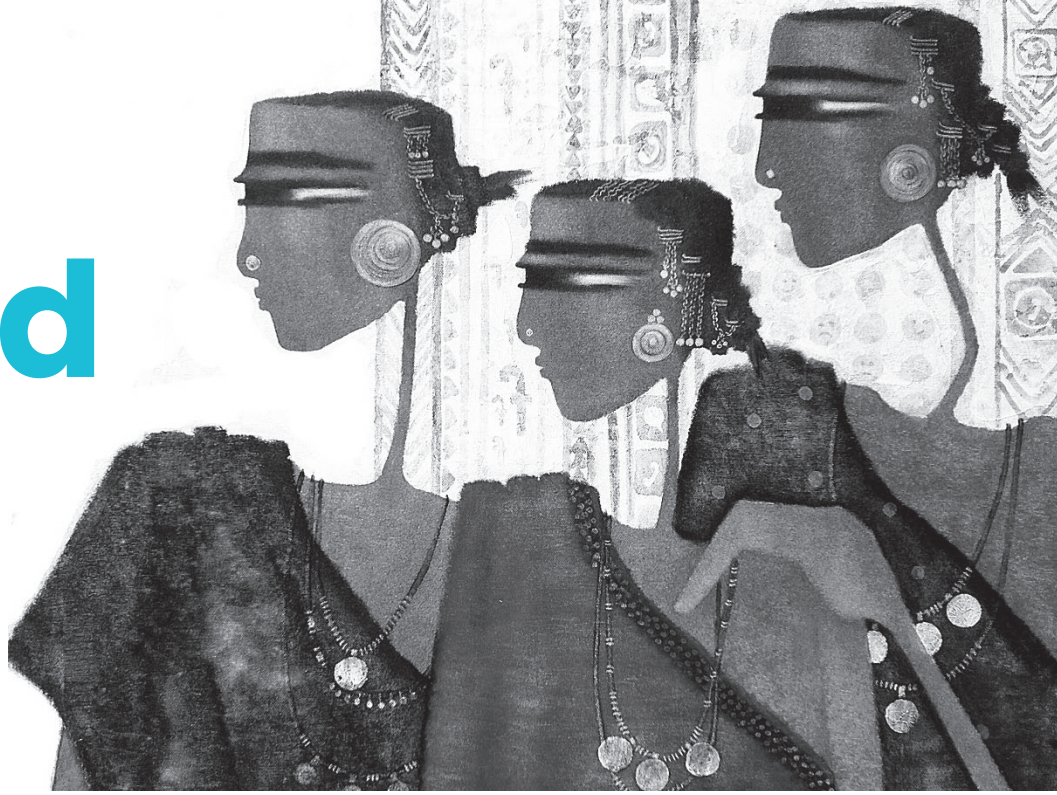


gallery g

gallery g was started in 2003 by Gitanjali Maini with the idea that art had to be for everybody: it had to be as accessible as much as it had to have value. Above all, it had to appeal, to please, even to challenge.

Innovative, inclusive and prolific, gallery g exemplifies the contemporary global Indian art gallery, centrally located in a global destination, Bangalore.

We are an art resource providing informed access to the best art and consultancy services for collectors, investors, architects and interior designers.



OUR BEGINNING

gallery g's activity suite is directed by Gitanjali Maini, an art management entrepreneur whose knowledge and extensive network have placed it at the forefront of Indian art investment and retail. Gitanjali's background in Industrial Relations gave rise to what is one of gallery g's innovative strengths, vis-à-vis artists and investors: relationship management, a prime requisite in the field.

OUR DIRECTION

gallery g is well-known for its directional mix of new, established and internationally known artists. Our Lavelle Road location, just off MG Road, makes us one of Bangalore's most sought-out art-resource-cum-exhibition venues.

With extensive, well-proportioned spaces, gallery g works as an

intimate viewing space for the serious collector and investor as well as a larger venue for exhibitions and related events. Flooded with natural light, it boasts views of a vertical eco-garden that's testimony of the scope our work is taking. Primarily, we offer heritage and contemporary masterworks: watercolours, charcoals, acrylics and oils, sculptures and installations, apart from antiquities.

OUR NETWORK

gallery g is associated with a variety of concerns by virtue of synergy of function and mission. Through our sister concern Print Brew, our clients can access allied visual and marketing communication allied to art transactions.

We're also associated with entities like The Raja Ravi Varma Heritage Foundation and the

Kochi Muziris Biennale, beneficial relationships for the stakeholders concerned as well as for art-lovers everywhere.

We've curated a suitable collection that's easily viewed, chosen, ordered and shipped: an exciting, handy way to start or build a collection.

OUR EXPERTISE

With an extensive collection of diverse art works from Modern and Contemporary Indian artists, from up and coming creators to pioneers like Raja Ravi Varma, MF Hussain, SH Raza, FN Souza and many others, **gallery g** is committed to making high-quality art an accessible and affordable lifestyle choice for everyone.

OUR SKILLS

Our skills in understanding a client's needs enable us to create visionary linkages between spaces and environments, going beyond simply the provision of arts. We strive to fit our expertise to create your collection, complement your space and match your budget.

Experiences with interior designers and property developers have enabled us to provide a service package with comprehensive selections that cater to commercial and residential units.

And if you want something specific, we're happy to have it commissioned to meet your requirements.

Contact us



gallery g

Maini Sadan, 38, Lavelle Road,
7th Cross, Bangalore - 560 001.
Karnataka, India.

+91 80 22219275

✉ lawrence@galleryg.com

🌐 galleryg.com

f [galleryGarts](#)

t [gallery_g_arts](#)

